



Dayanand Education Society's

Dayanand Science College, Latur

(NAAC A+ with 3.40 CGPA)

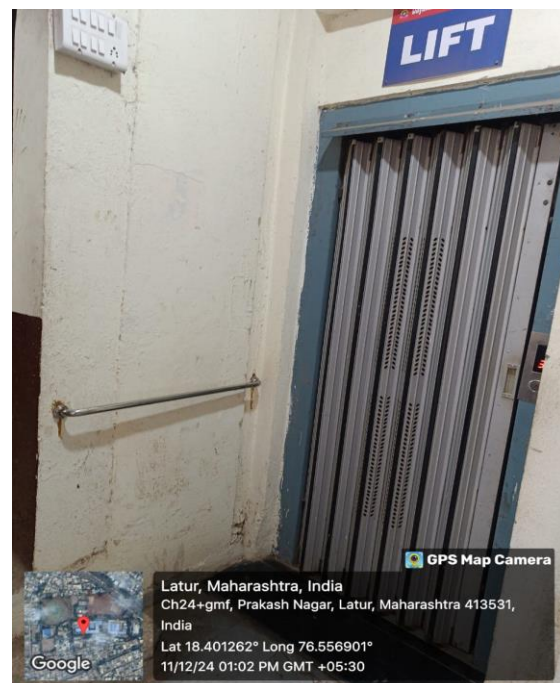
Facility available for physically handicap students and Staff.

The ramps are constructed for the easy access of physically disabled persons. These ramps are also used for smoothly operating wheelchair of divyangjan students.

The college has well equipped facilities for the persons with disabilities like ramps and lifts. The college has made facility of ramps and lift for disabled students and teachers for easy access of classrooms. The ramps are constructed at entry gate, entry of department. The lift is benefitted to those who are physically disabled. The lift is made by JK Qualitech Pvt. Ltd. having capacity to occupy six persons including operator. The lift has Annual maintenance contract which can be renewed every year for its proper maintenance. The floor numbers are labeled as a signage for divyangjan.

The ramps are constructed at entry gate of Dayanand Science College main entrance. The ramps are constructed for the easy access of physically disabled persons.

1. Built environment with lifts for easy access to classrooms



2. Built environment with ramps for easy access to classrooms



3. Facilities for Persons with Disabilities (Divyangjan)

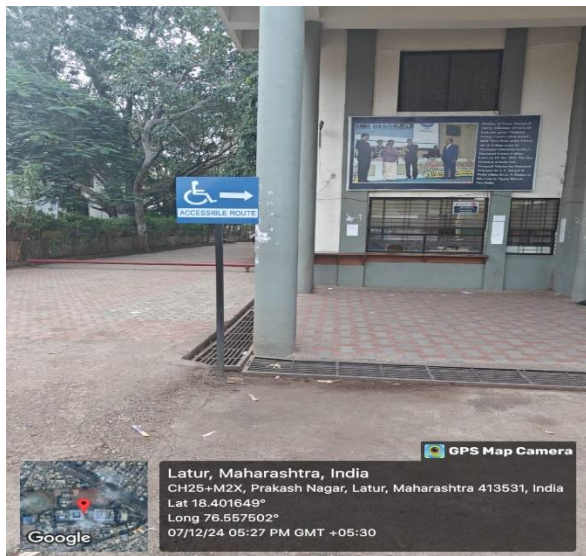


7.1.7



4. Signage including tactile path, lights, display boards and signposts

The college has tagged various signposts, following are the signpost in the college such as Pedestrians path, tactile path, light, display boards, path for Blinds, parking of Divyangjan vehicles, Divyangjan Toilet, Enquiry and information desk with flip display facilities are available.



7.1.7



5. Disabled-friendly washrooms

In college and hostels separate Divyangjan friendly washrooms for male and female are constructed. Geotagged photos are given below:

7.1.7



6. Provision for enquiry and information: Human assistance, reader

7.1.7

